



# September 2011 Service Reductions Preliminary Proposal

Presented to STA Board of Directors  
September 15, 2010

# Outline of Presentation

- Proposal Development
- Public Input and Implementation Timeline
- Proposed Changes
- Next Steps

# Proposal Development

- Board Guidance (April 2010)
- Employee input
- Previous public input
- Route performance report and ridership data
- Service Improvement Committee (internal)

# Timeline

## Preliminary Proposal

- Presented to the Board September 15, 2010
- Public/Customer Outreach October 1 thru December

## Draft Recommendation

- Publish January 2011
- Continue outreach and public input (January –March)
- Hold public hearing(s) February 2011

## Final Recommendation

- Present to Operations and Customer Service Committee March 2011
- Board action March 2011

## Service Changes

- If adopted, Bus route changes effective September 18, 2011
- Paratransit boundary changes effective March 2012

# Proposed Changes

Initial Estimates of Proposed Reductions	
Proposed Annual Hours of Reduction	34,000 – 38,000
Estimated cost reductions	\$3.4 Million - \$3.8 Million
Complete route eliminations	Three
Estimated Fleet Reductions	8 – 11 coaches
Estimated Bus Ridership Impact (annual rides)	740,000 – 1,040,000 less rides
Estimated Paratransit Riders Directly Affected	100

# Proposed Route Eliminations

Proposed Complete Eliminations	Explanation
41 Latah	Fails all three route performance standards
62 Medical Lake Hospitals	Unable to justify continued fixed-route service to Medical Lake under current operating requirements
67 Medical Lake / Geiger	

Other Proposed Eliminations	Explanation
30 Francis	Mitigated by changes to 22, 27
31 Garland	Partial mitigation with changes to 23
42 Maple	Consolidated with Route 43
46 Altamont	Route 2 expanded to all-day service
72 Liberty Lake Express	Consolidated with Route 74
95 Millwood	Adjustments to Route 32 to serve high demand area

# Bus Route Maps

- Spokane Valley
- North Spokane
- South Spokane
- West Plains
- Cheney

# SPOKANE VALLEY

## Proposed Eliminations



# North Spokane

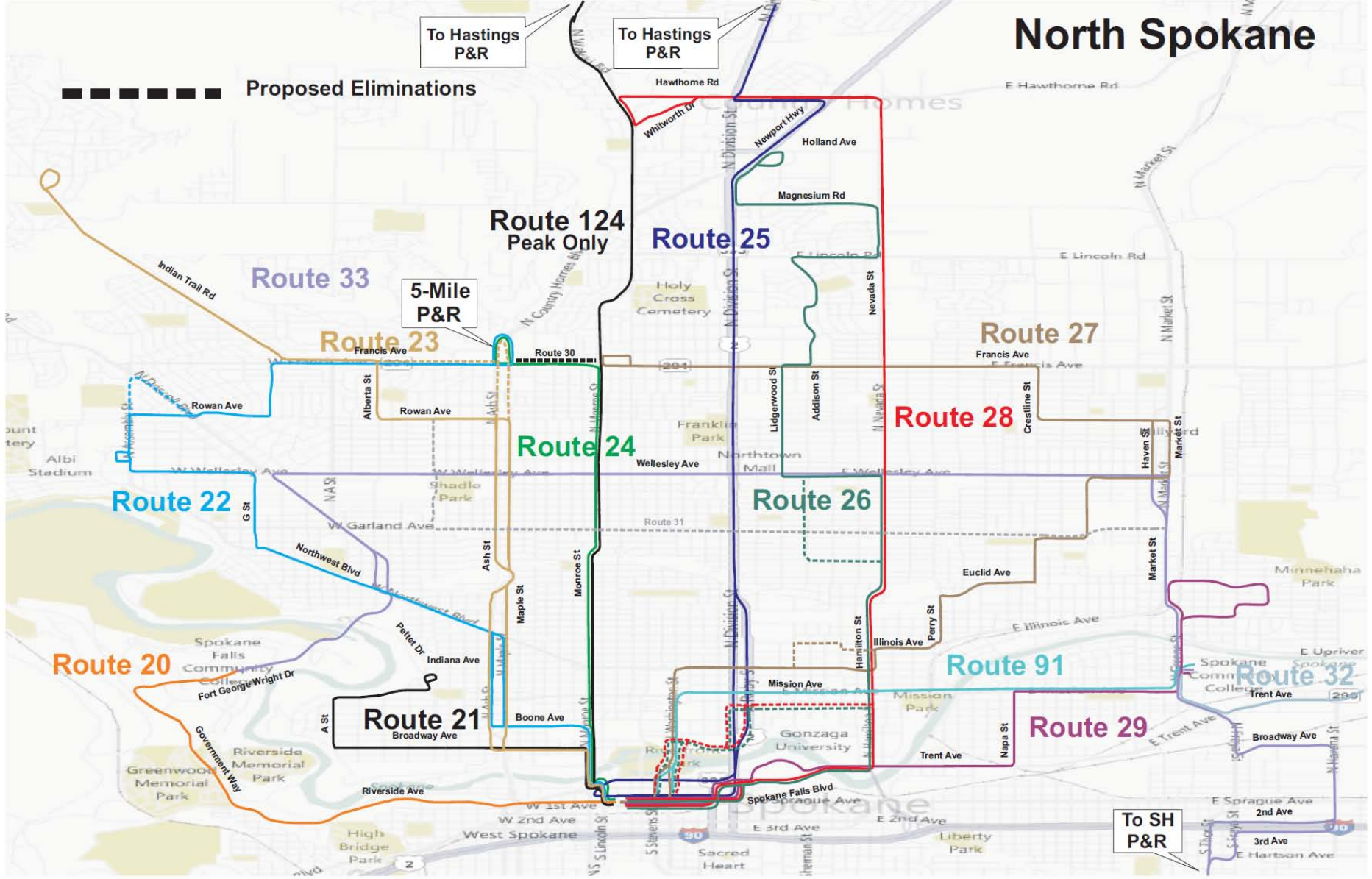
Proposed Eliminations

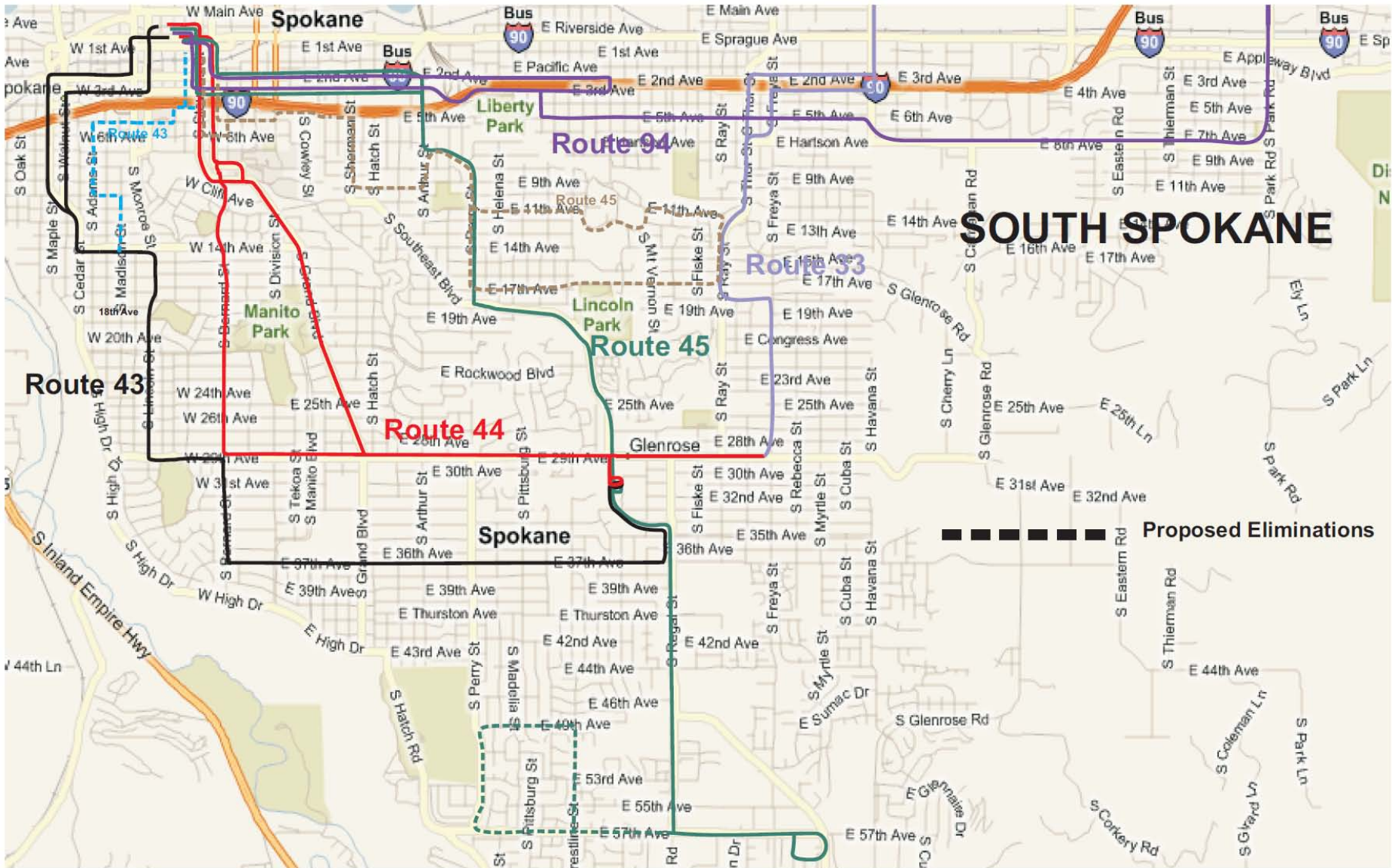
To Hastings  
P&R

To Hastings  
P&R

5-Mile  
P&R

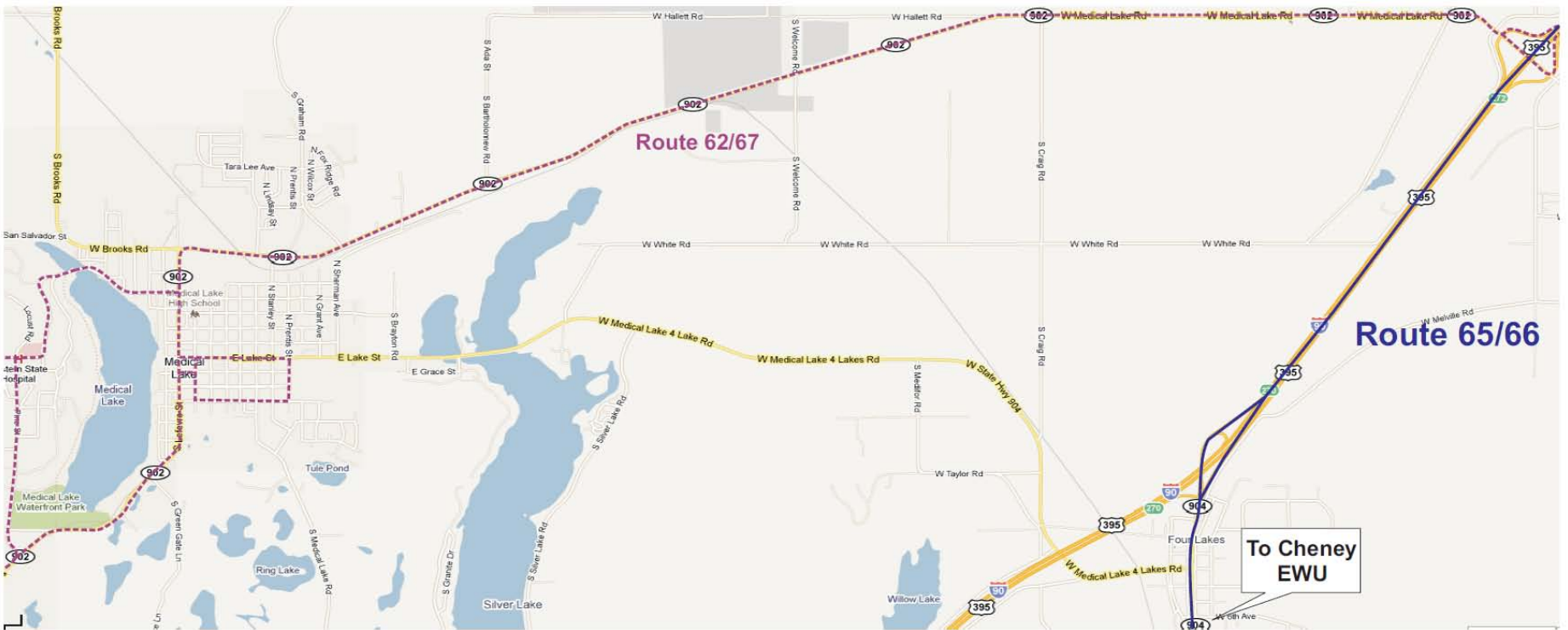
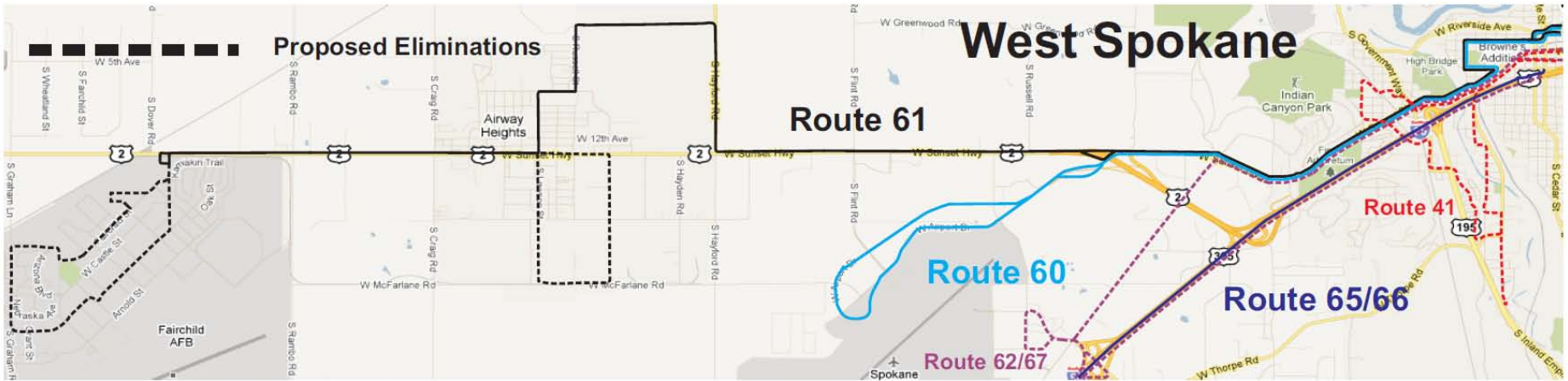
To SH  
P&R

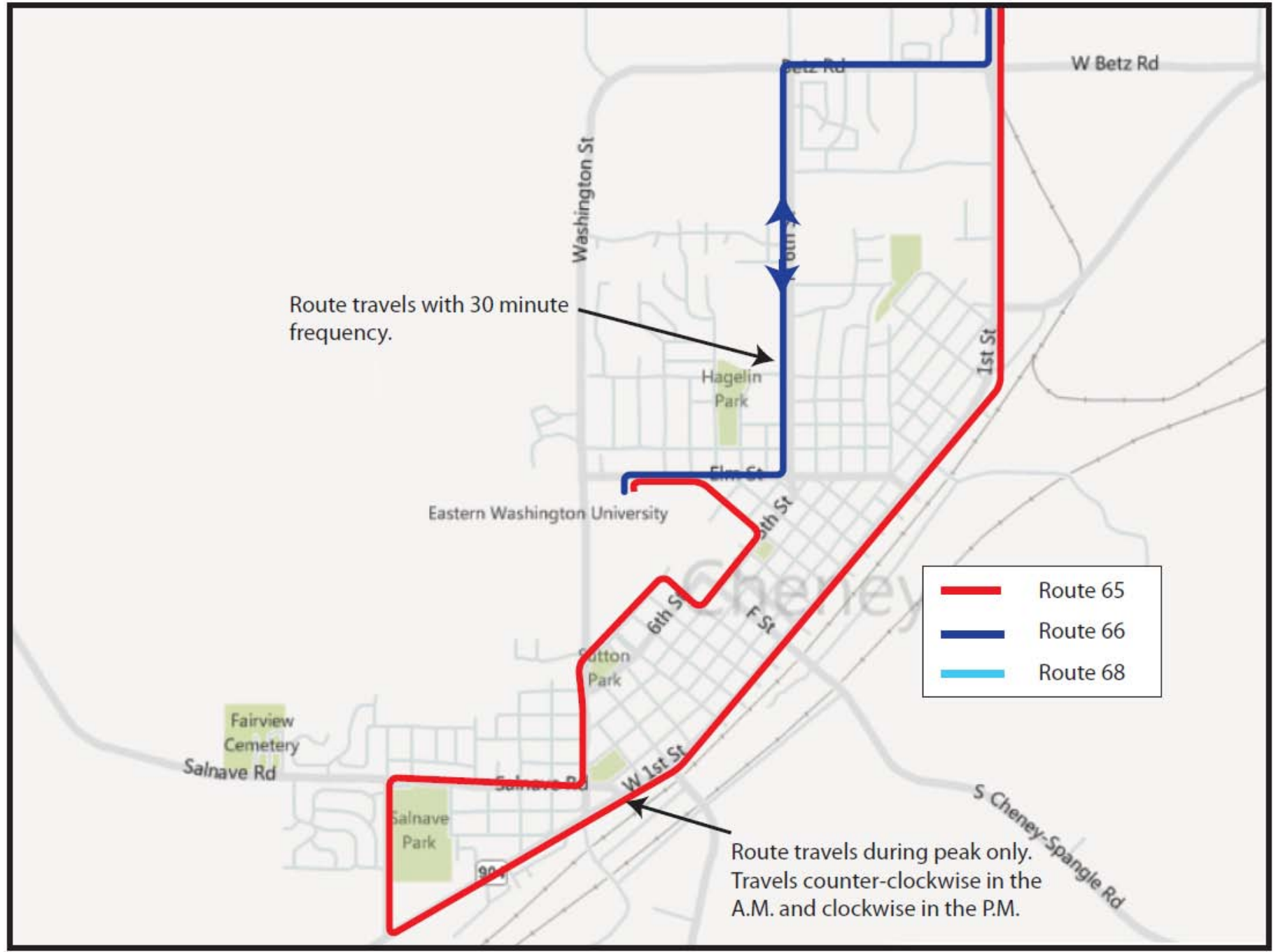




# SOUTH SPOKANE

Proposed Eliminations

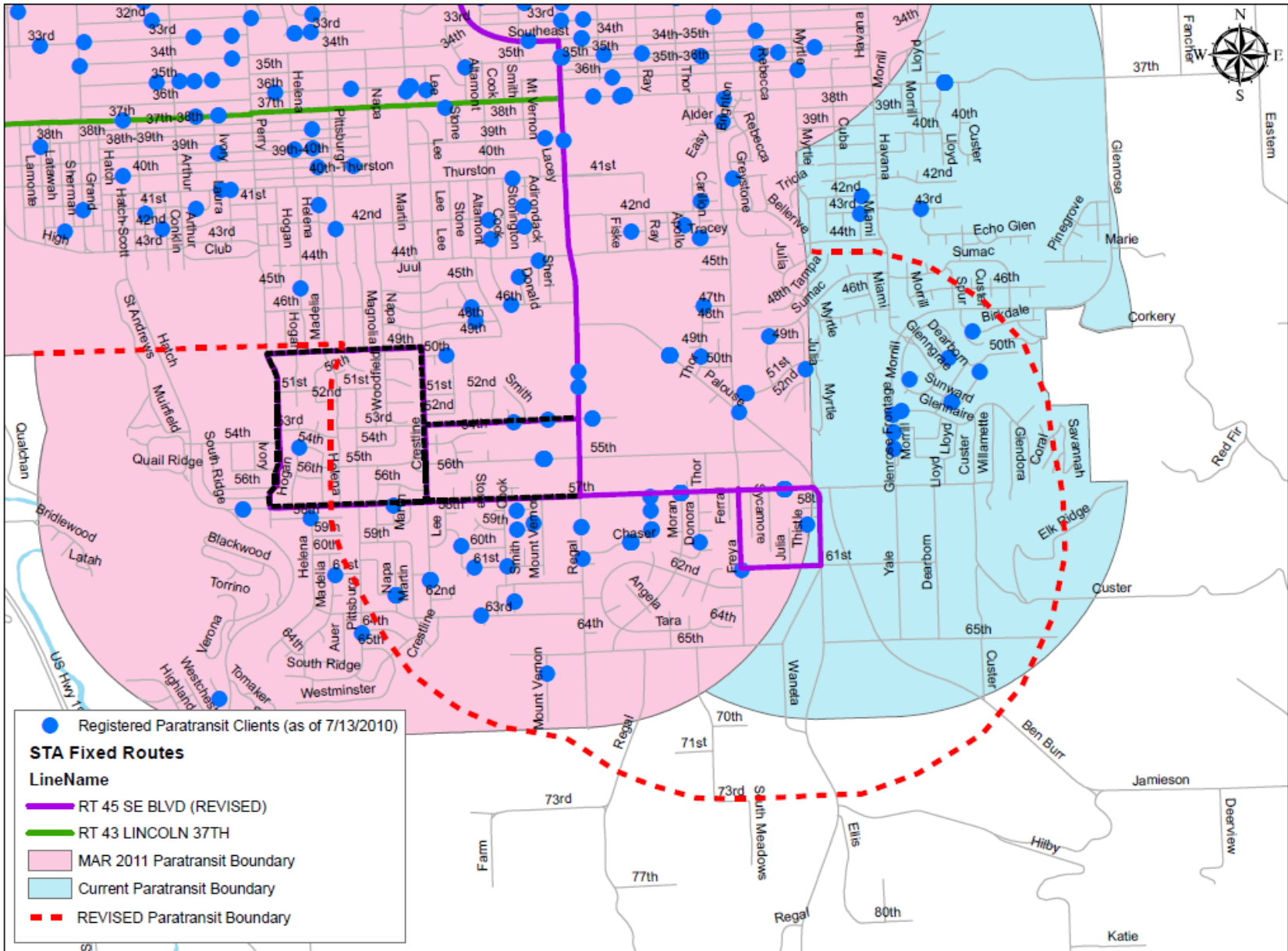




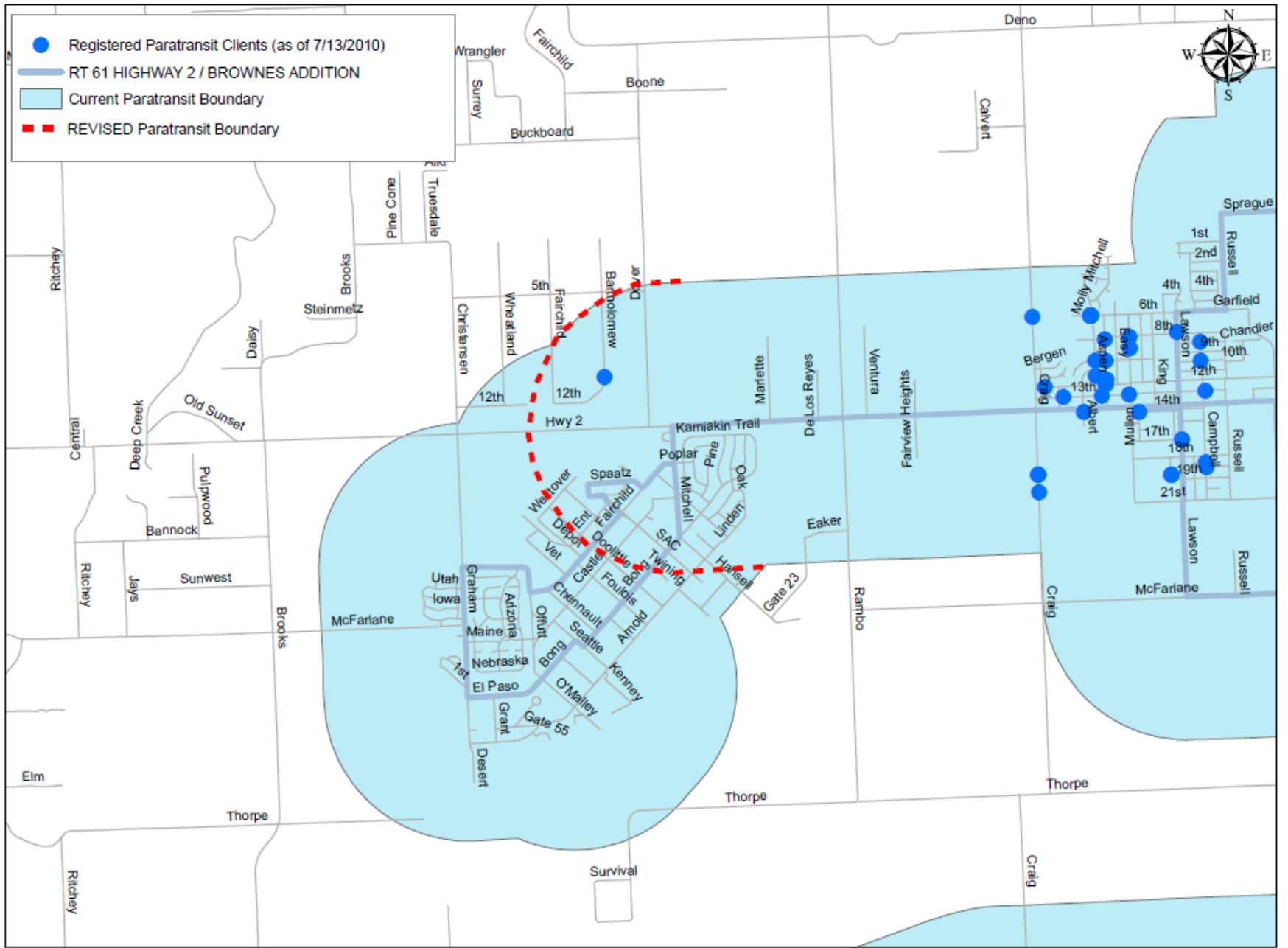
# Paratransit

- Paratransit boundary is  $\frac{3}{4}$  mile from fixed-routes
- Riders living in or traveling to areas affected will be notified

Community Affected	Related Bus Route	Paratransit Customers in Impacted Area
57th & Perry	45 Southeast Blvd	7
East Valley	96 Pines	1
Fairchild	61 Hwy 2 / Browne's Addition	0
Latah Valley	41 Latah	5
Medical Lake	62 Medical Lake Hospitals 67 Medical Lake / Geiger	51
Millwood	95 Millwood	35
NW Terrace	30 Francis	1
<b>TOTAL:</b>		<b>100</b>



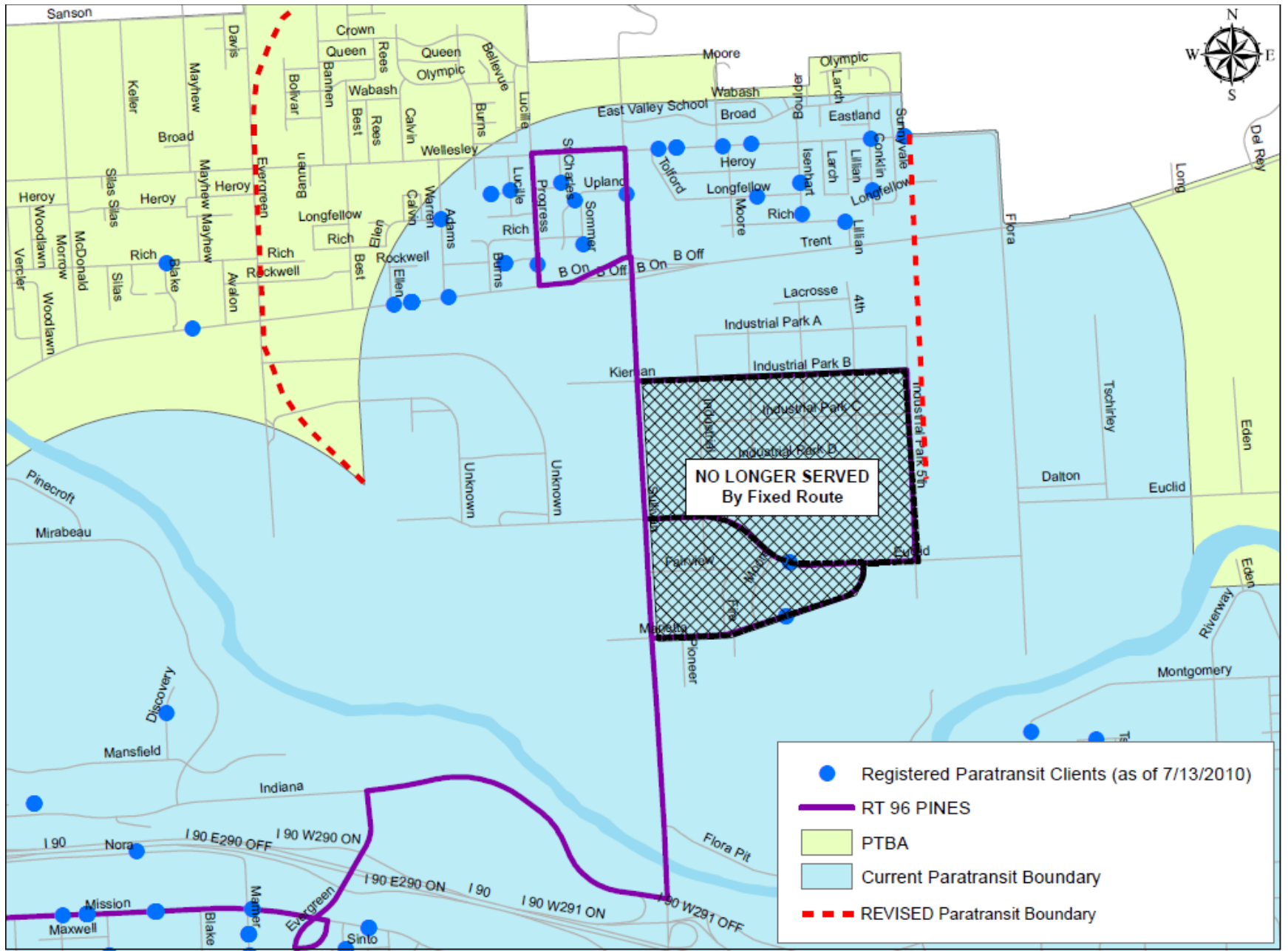
**Proposed Paratransit Boundary Revision - 57th & Palouse**



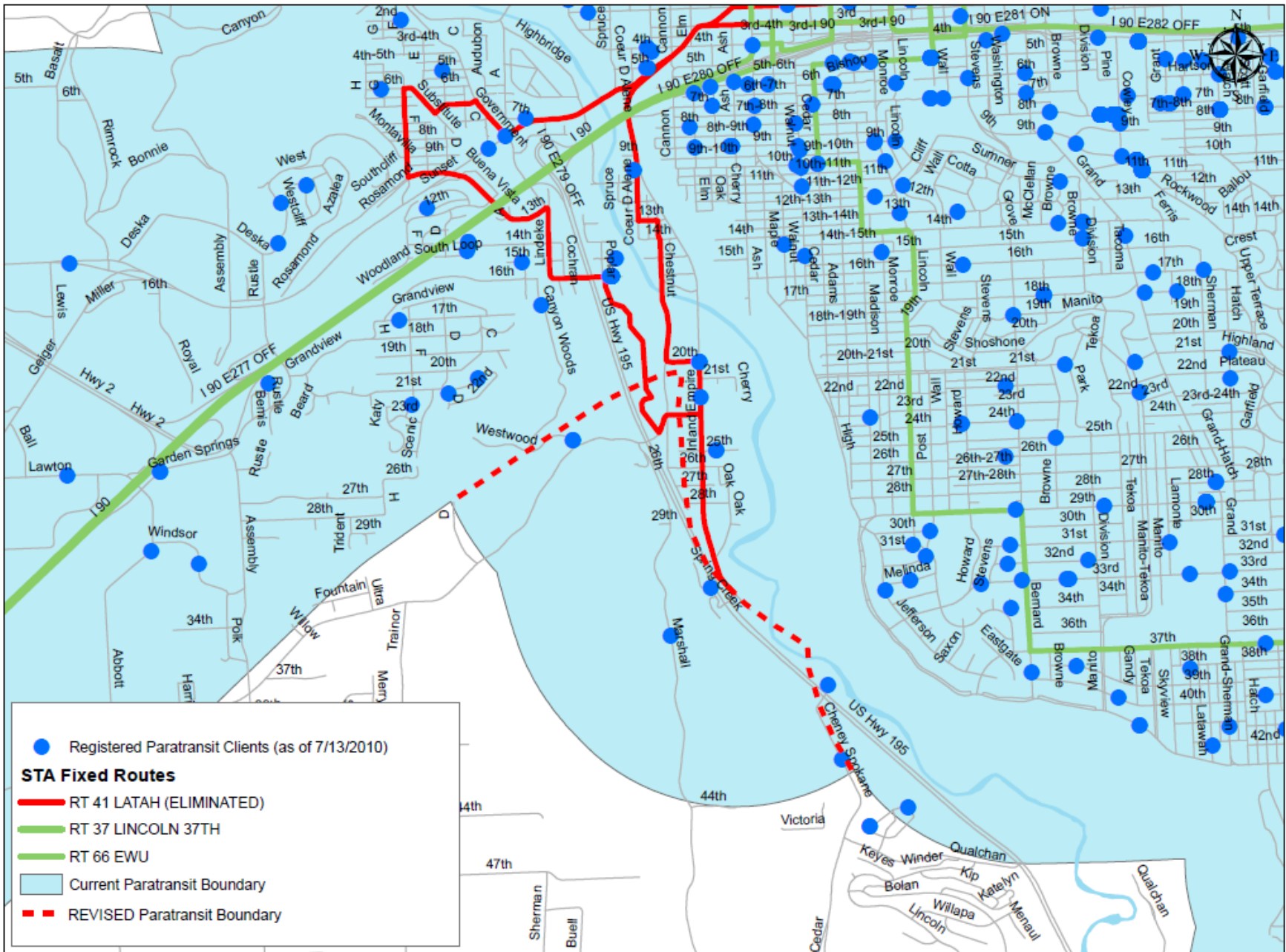
**Proposed Paratransit Boundary Revision - Fairchild AFB**



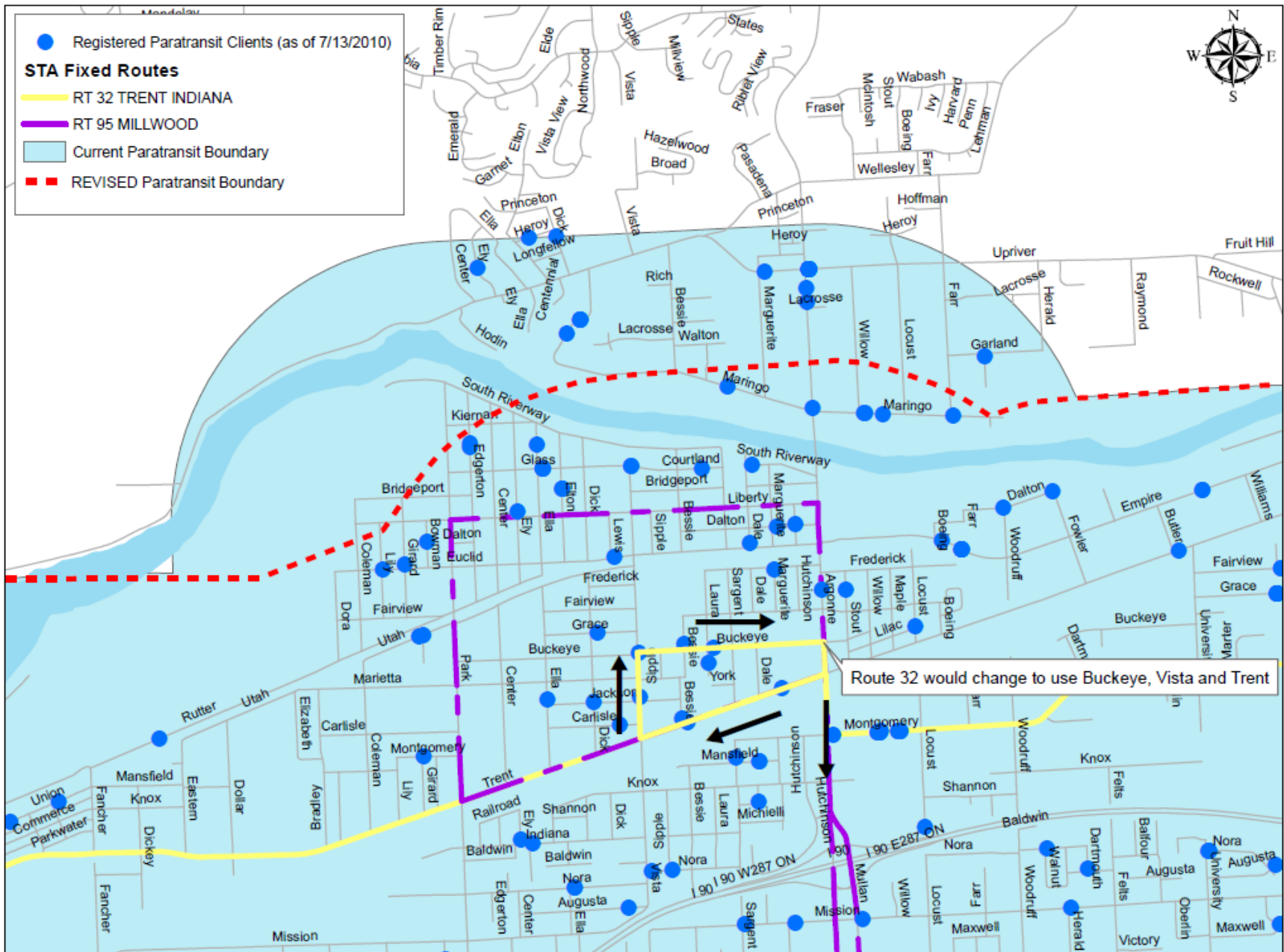




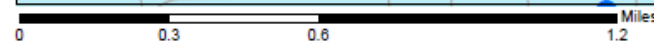
**Proposed Paratransit Boundary Revision - East Valley**



**Proposed Paratransit Boundary Revision - Latah**



**Proposed Paratransit Boundary Revision - Millwood Area**



# Next Steps

- Survey and complete information on web by October 1
- Presentations to cities, county and community groups in October and November
- Comments and input from employees and public requested
- Review by board committees in October
  - Citizen Advisory Committee
  - Operations and Customer Service Committee